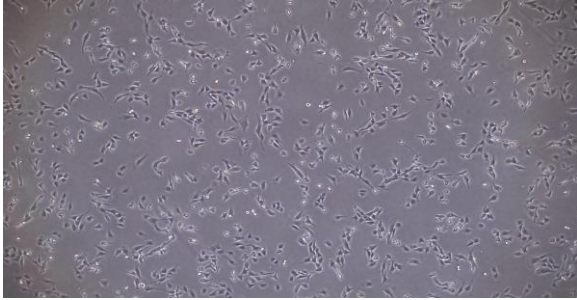


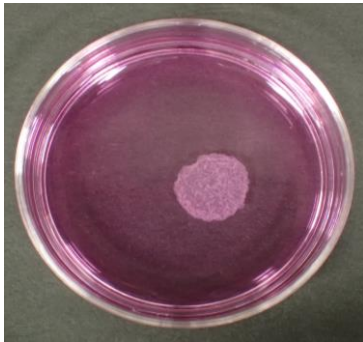
**Culture of C2C12 (mouse myoblast cell line) on SSCW<sup>®</sup>-S <standard type>**

Seeding density:  $1 \times 10^5$  cells/ $\Phi$ 35mm dish, D-MEM(High Glucose) with L-Glutamine, Phenol Red and Sodium Pyruvate +10% fetal bovine serum

**Day 1 after cell seeding**



**Photo: C2C12 cell sheet**



**Day 5 after cell seeding**



**C2C12 cell sheet  
by phase contrast microscope**



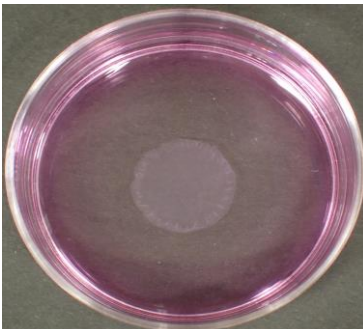
**Culture of BAEC (bovine aortic endothelial cell line) on SSCW<sup>®</sup>-L (High adhesive type)**

Seeding density:  $1 \times 10^5$  cells/ $\Phi$ 35mm dish, D-MEM(High Glucose) with L-Glutamine, Phenol Red and Sodium Pyruvate +10% fetal bovine serum

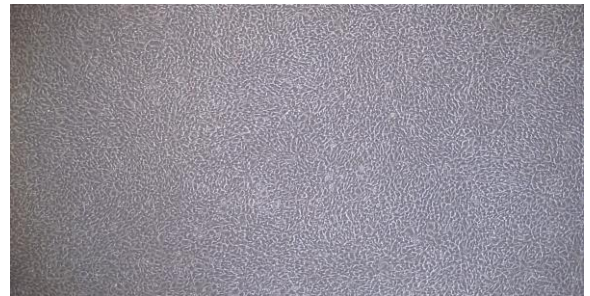
**Day 1 after cell seeding**



**Photo: BAEC sheet**



**Day 5 after cell seeding**



**BAEC sheet  
by phase contrast microscope**

